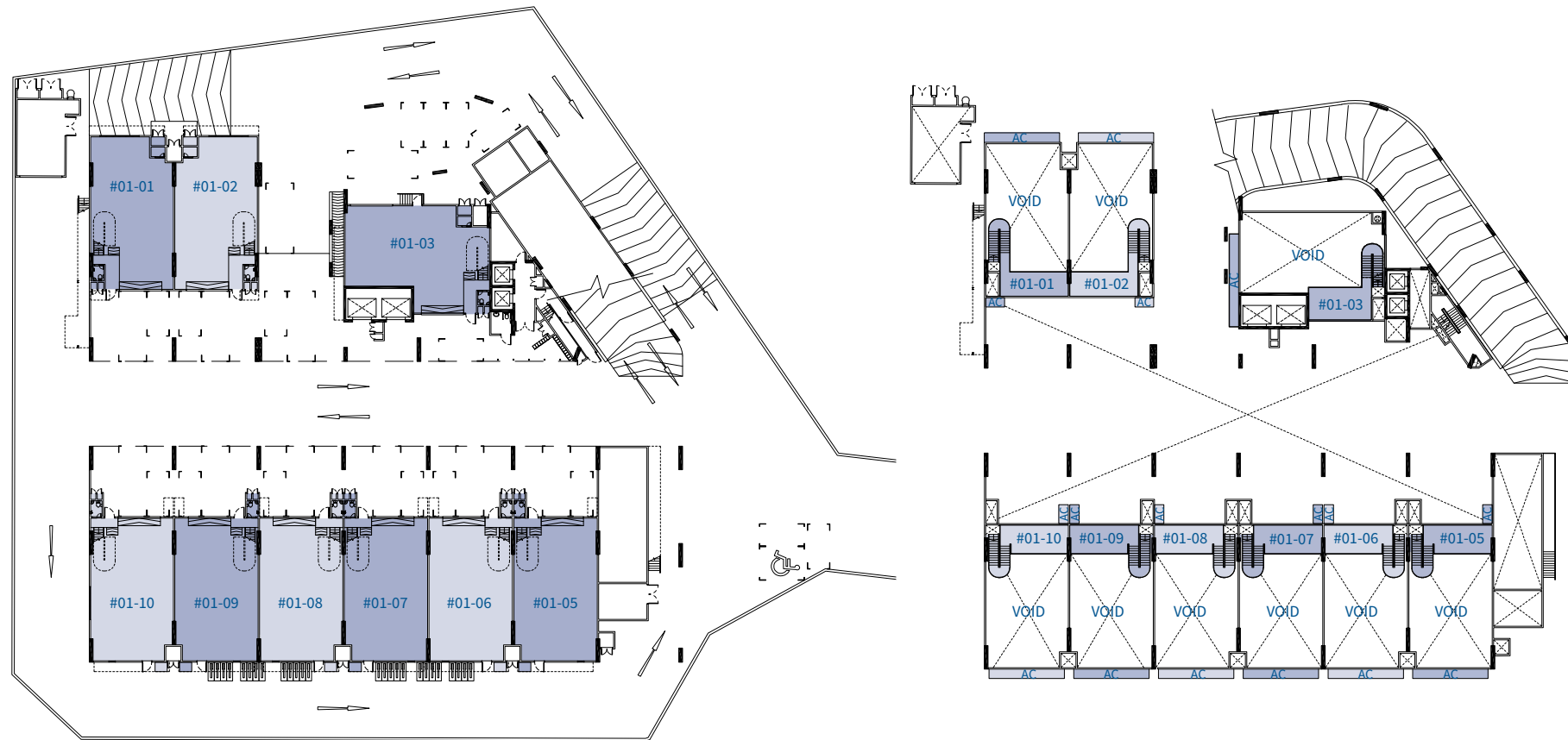


# Grand Mezzanine

1<sup>st</sup> Storey

Floor to floor height: 6.825m



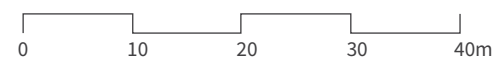
Floor Plan

Mezzanine

## Legend:

AC AC Ledge

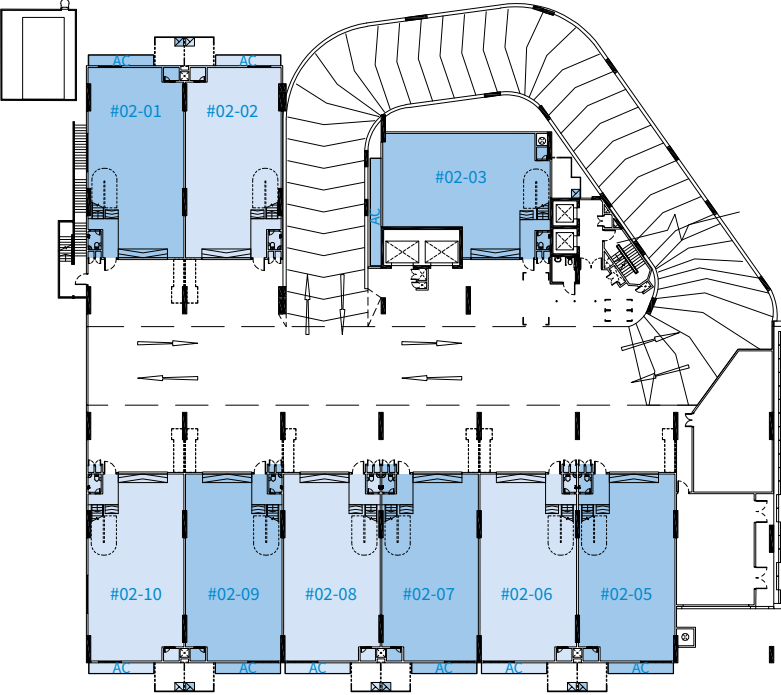
X VOID



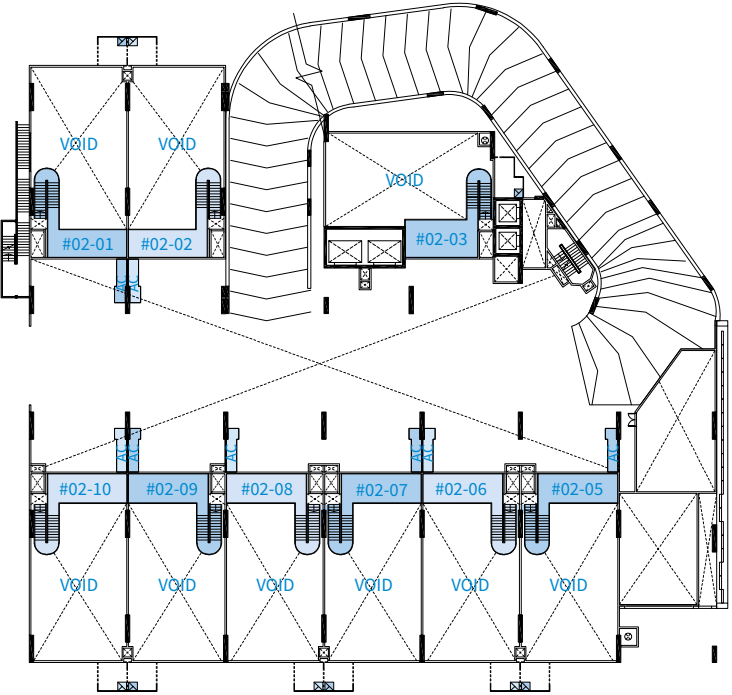
# Premier Mezzanine

2<sup>nd</sup> Storey

Floor to floor height: 6.825m



Floor Plan

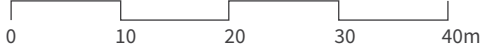


Mezzanine

**Legend:**

AC AC Ledge

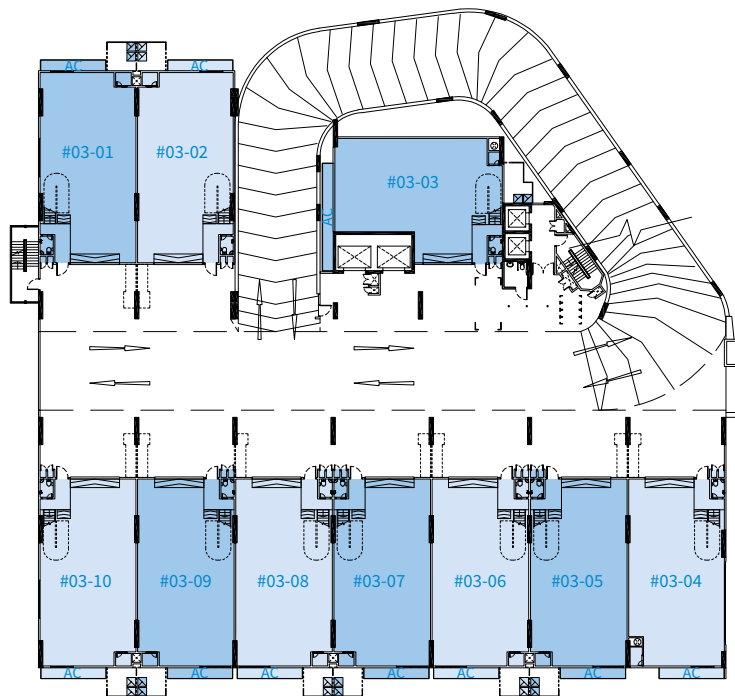
X VOID



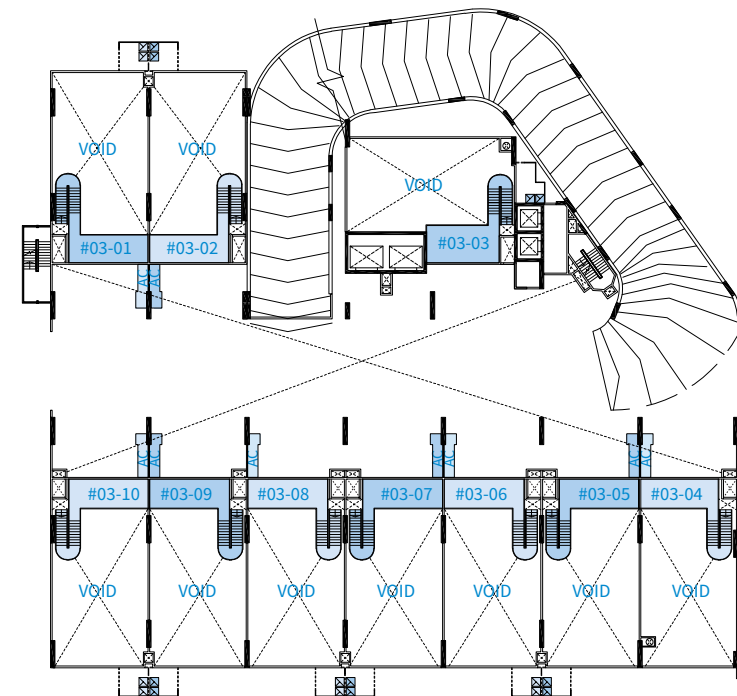
# Premier Mezzanine

3<sup>rd</sup> Storey

Floor to floor height: 6.825m



Floor Plan

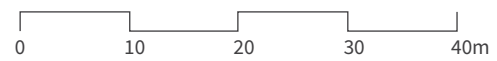


Mezzanine

### Legend:

AC AC Ledge

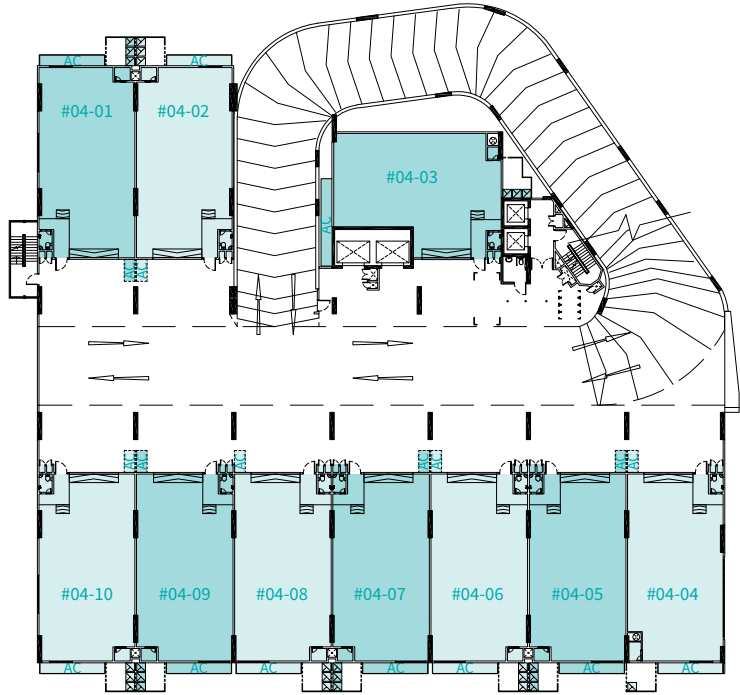
X VOID



# Sky Module

## 4<sup>th</sup> Storey

Floor to floor height: 6.825m

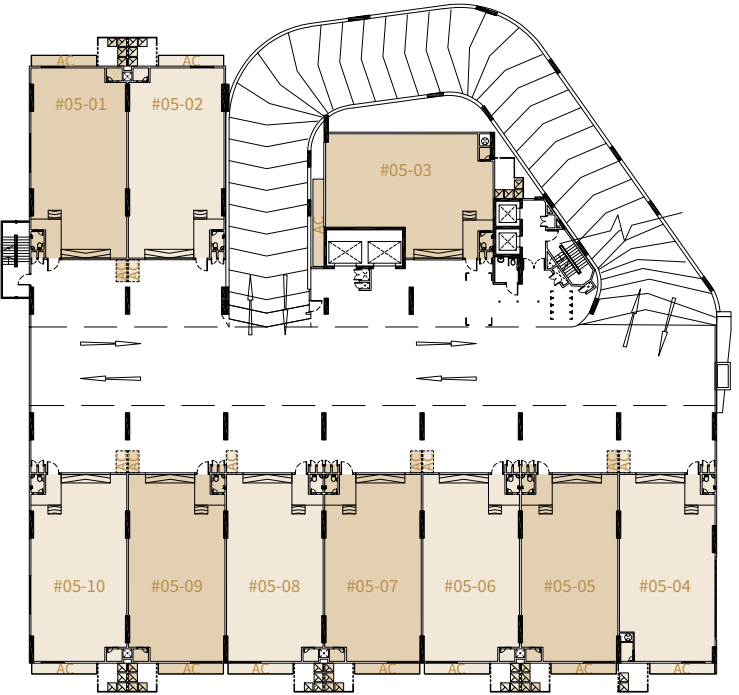


Floor Plan

# Classic Module

## 5<sup>th</sup> Storey

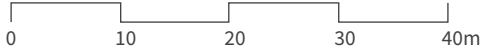
Floor to floor height: 5.075m



Floor Plan

### Legend:

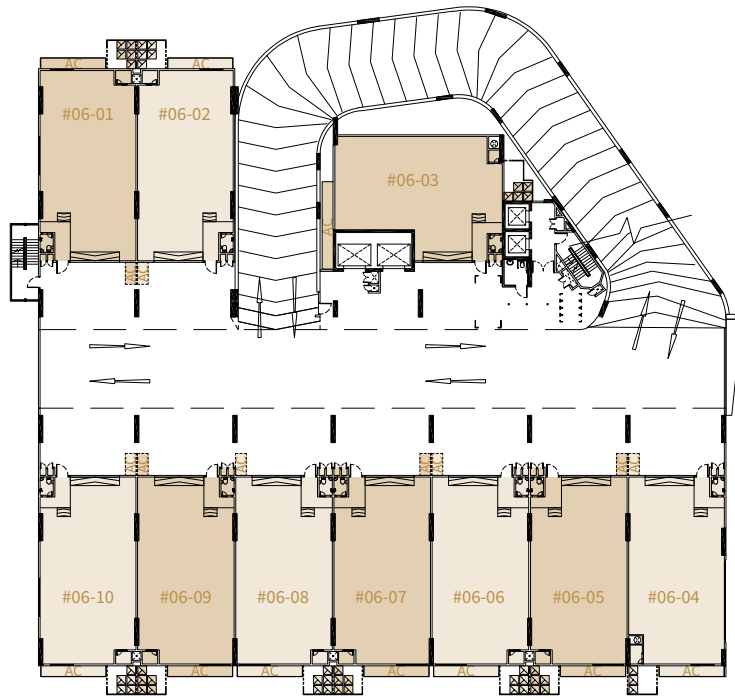
AC AC Ledge



# Classic Module

## 6<sup>th</sup> Storey

Floor to floor height: 5.075m

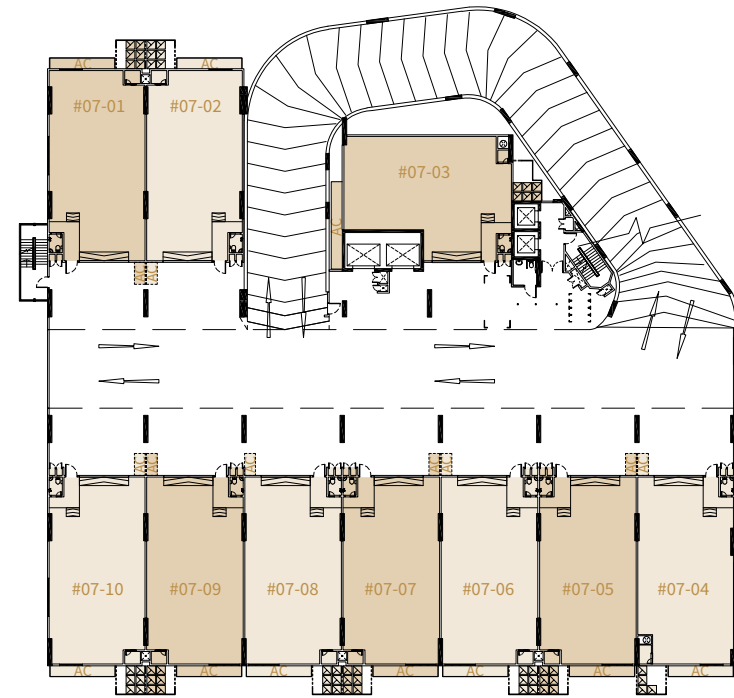


Floor Plan

# Classic Module

## 7<sup>th</sup> Storey

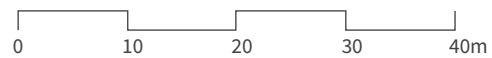
Floor to floor height: 5.075m



Floor Plan

### Legend:

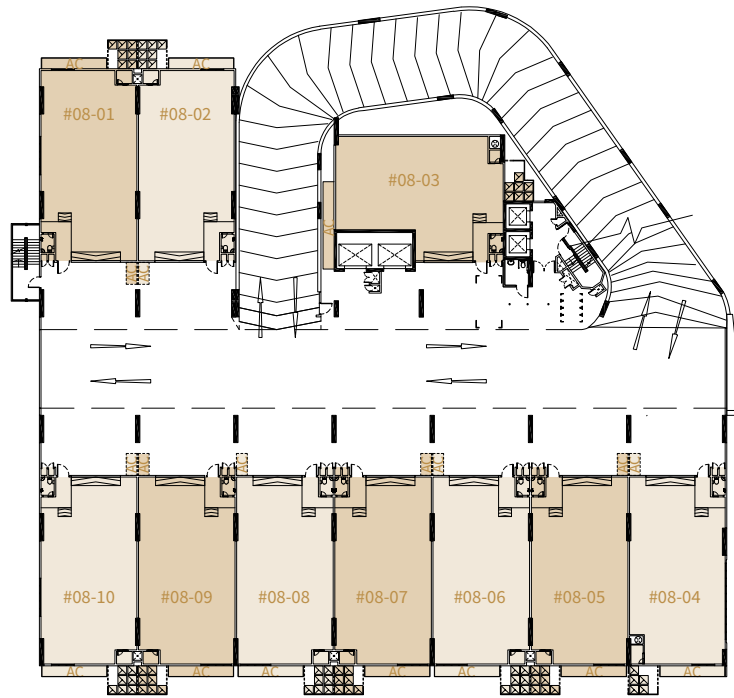
AC AC Ledge



# Classic Module

## 8<sup>th</sup> Storey

Floor to floor height: 5.075m

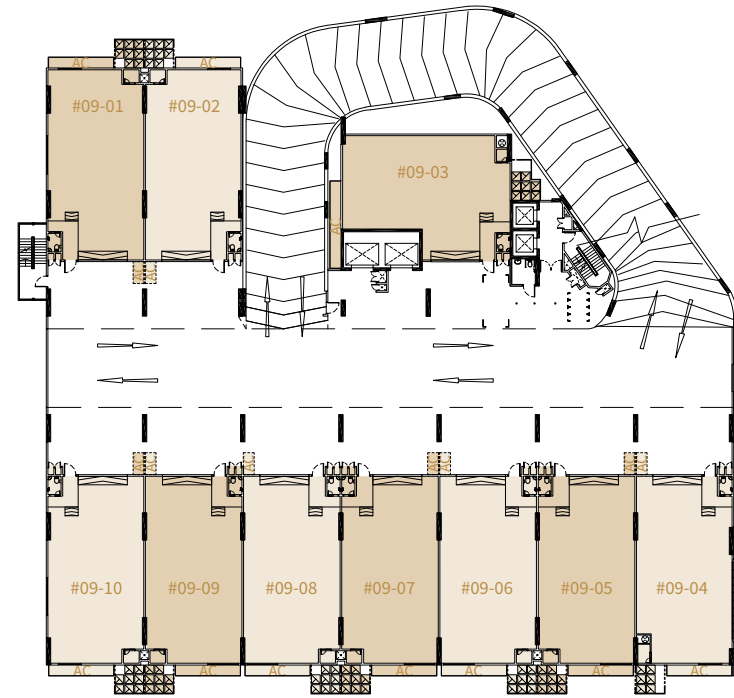


Floor Plan

# Classic Module

## 9<sup>th</sup> Storey

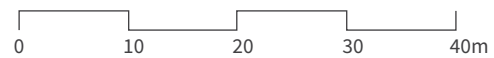
Floor to floor height: 5.075m



Floor Plan

### Legend:

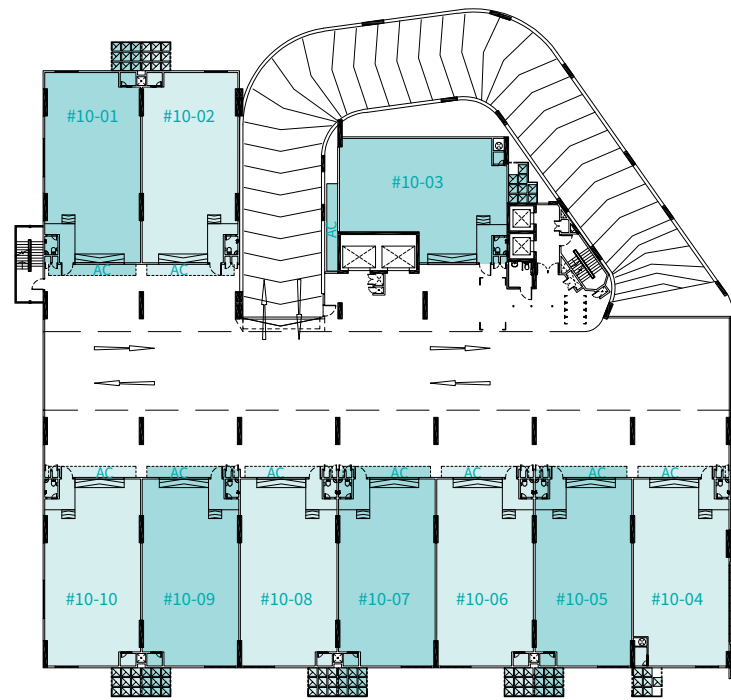
AC AC Ledge



# Sky Module

10<sup>th</sup> Storey

Floor to floor height: 7m



Floor Plan

## Legend:

AC AC Ledge

